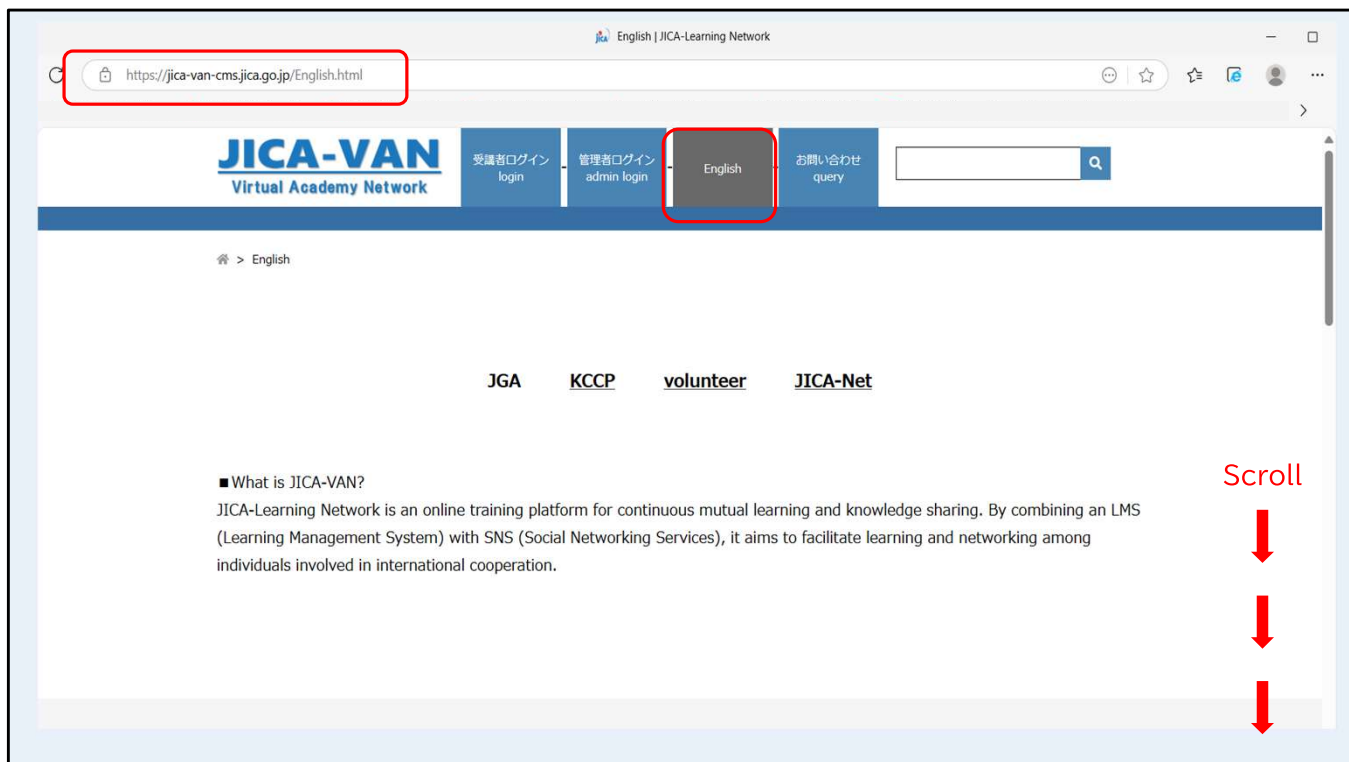


【1】 Login

Welcome to the JICA Learning Network!
This section explains how to log in.



Access the JICA Learning Network and click on the English tab.

The screenshot shows the JICA-Learning Network login interface. On the left, a red rounded rectangle highlights the 'Student Login' section. This section includes a title, a descriptive paragraph, a login form with fields for 'User ID' and 'Password' (both masked with asterisks), a 'Learning Network log in' button, and a 'Forgot your ID/password?!!' link. On the right, the 'Administrator Login' section is visible, including instructions for administrators, a security note about single sign-on, and a yellow box with additional login instructions. Three red arrows on the right side of the page point downwards, indicating the scroll direction.

JICA-Learning Network
Student Login

JICA-Learning Network is an online training platform for continuous mutual learning and knowledge sharing. Participants can log in to the online training using their user ID and password. Please review the manual before starting the course.

JICA-Learning Network log in

User ID *****

Password *****

Learning Network log in

[Forgot your ID/password?!!](#)

JICA-Learning Network
Administrator Login

Administrators should access the administrator site below and log in using their ID/PW.

**For security reasons, single sign-on is not available for administrator login.*

Please enter the user ID and password in half-width alphanumeric input mode.

You can use the same URL on a PC, smartphone, or tablet.

Scroll down the screen, enter your user ID and password in the JICA-Learning Network Student login field, and click “**Learning Network log in**”.

Please enter your user ID and password using half-width alphabetic characters.

You can use the same URL on a PC, smartphone, or tablet.

The image shows two screenshots of a web application. The top screenshot is the 'JICA-Learning Network log in' page. It features a title 'JICA-Learning Network log in' at the top. Below the title are two input fields: 'User ID' and 'Password'. Under the 'Password' field is a blue button labeled 'Learning Network log in'. Below the button is a red-outlined box containing the text 'Forgot your ID/password? !'. The bottom screenshot is the 'KnowledgeDeliver' email verification page. It has the 'KnowledgeDeliver' logo at the top left. Below the logo is a text prompt: 'Please enter the email address you registered for this site, and press the "Next" button.' Below the prompt is an input field containing the text '*****@*****.***'. At the bottom of the input field are two buttons: 'Next' (highlighted with a red box) and 'Cancel'.

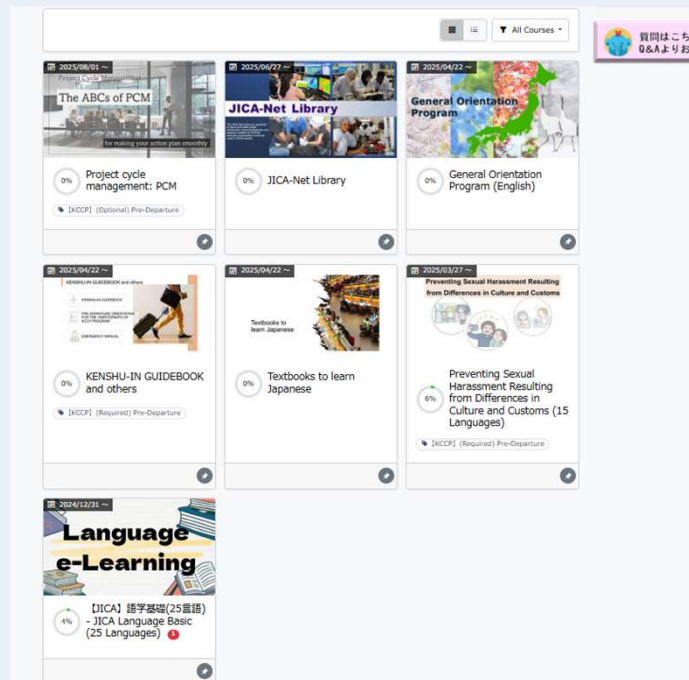
If you want to change your password or have forgotten it, click **“Forgot your ID or password?”** below the login button.

Enter the email address registered in the user ID system and click **“Next”**.

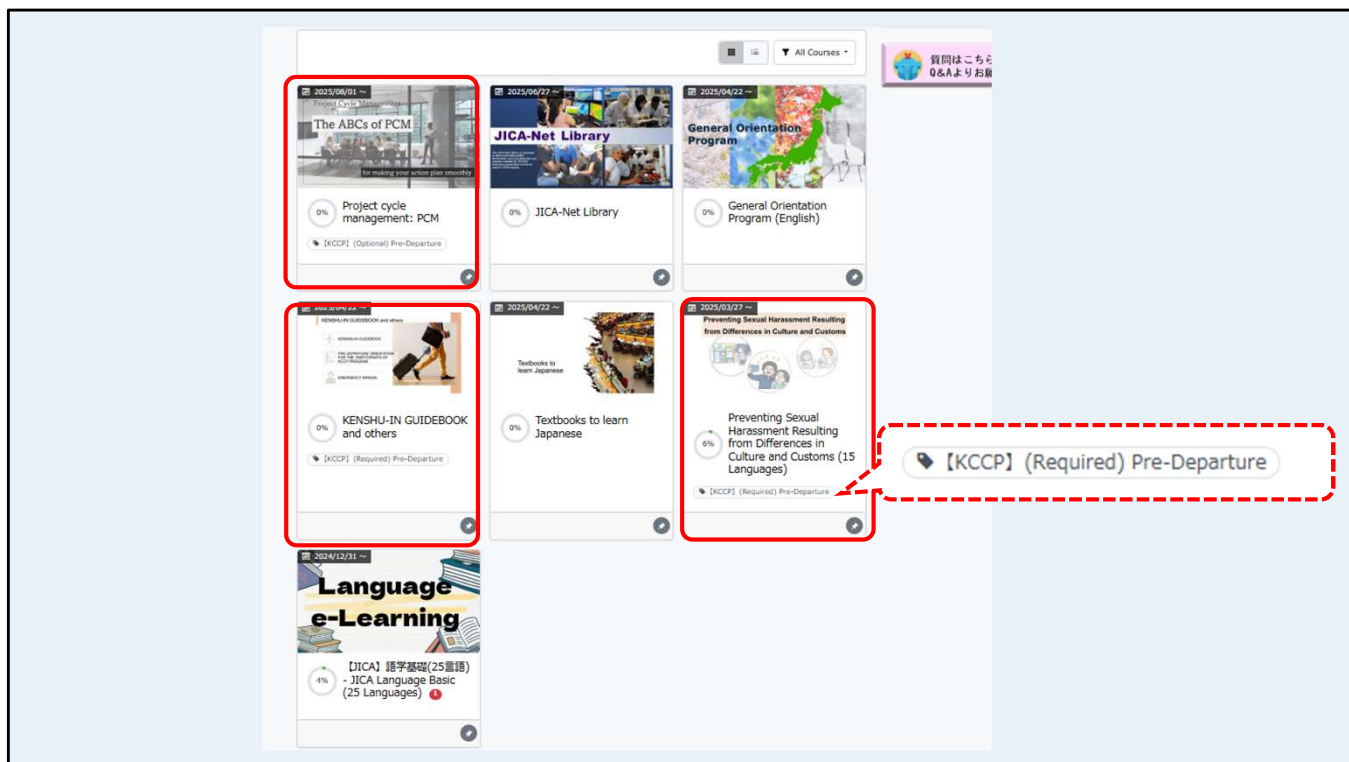
Confirm that an email has been sent to the email address you entered, and reset your password using the URL provided in the email. Enable cookies and log in.

【2】Learner's Home Screen and Your Class

Next, we will explain the top screen for learners and your class.

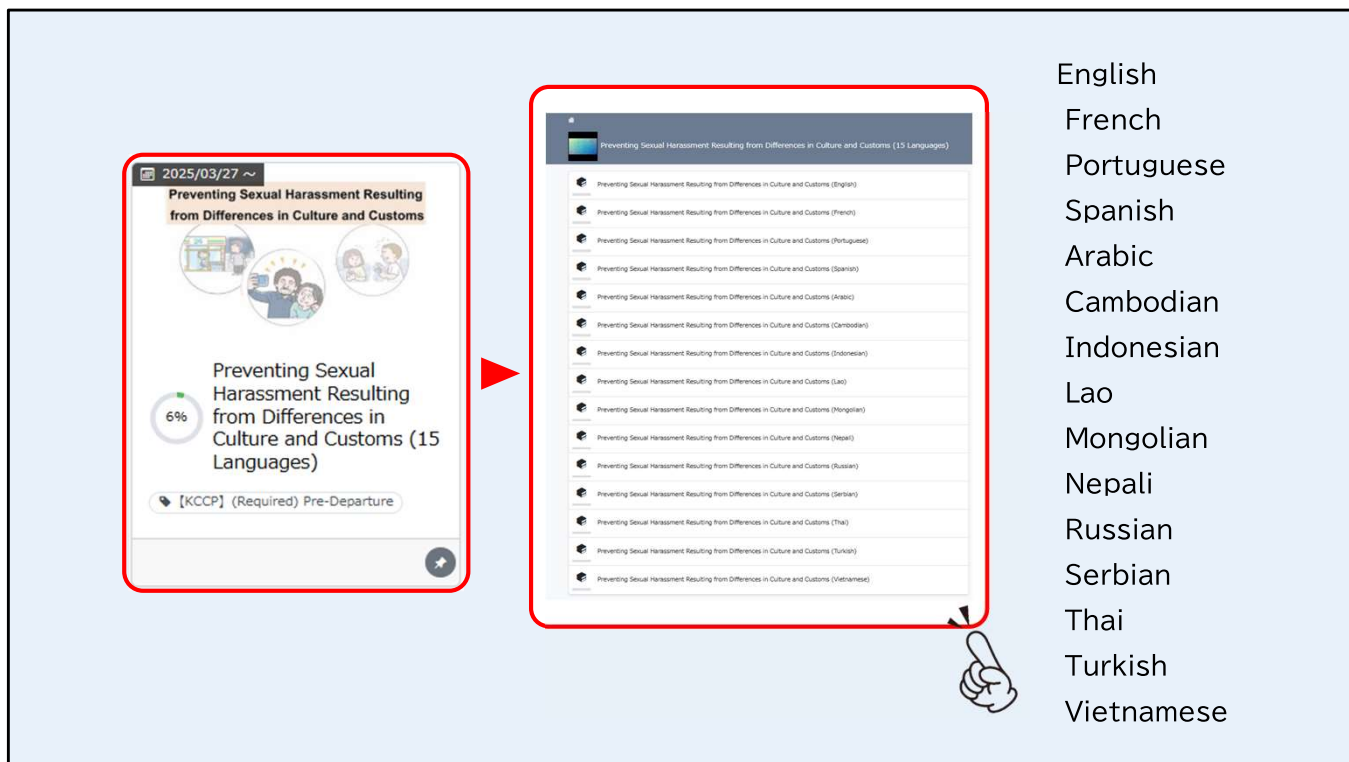


When you log in, several classes will already be registered.



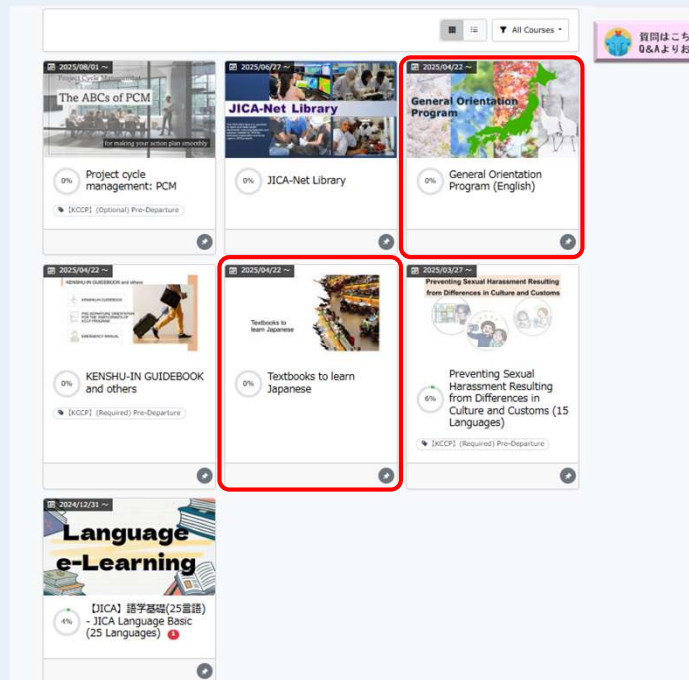
Please be sure to take the “**Required**” classes before arriving in Japan.

If you have not taken the required classes, you will receive a reminder email.

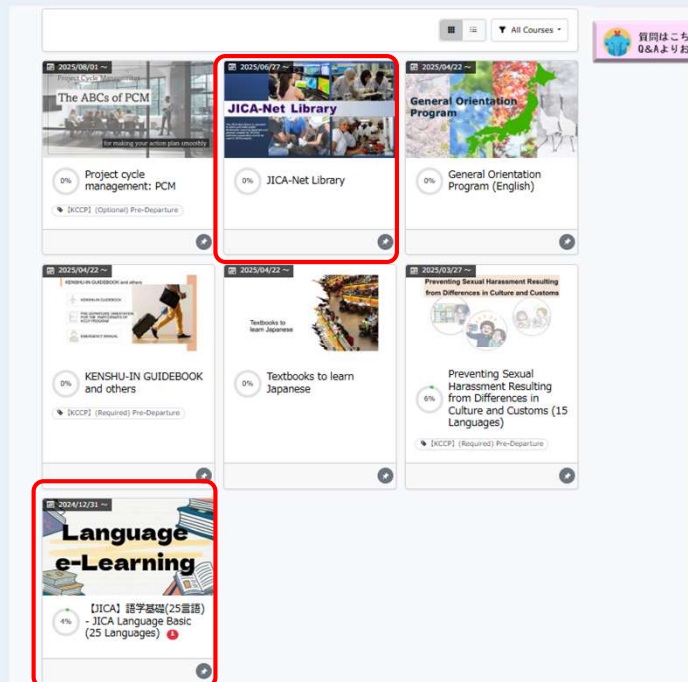


The class titled “**Preventing Sexual Harassment Resulting from Differences in Culture and Customs**” is available in 15 languages.

Please select the language that best suits you to participate in the course.



Other classes are optional, but they are useful for your stay in Japan.



JICA also offers open classes to all users.

Arabic
Indonesian
Egyptian Arabic
Kyrgyz
Khmer
Sinhala
Spanish
Swahili
Thai
Tamil
Tetum
Nepali
Hindi

Language e-Learning

【JICA】語学基礎(25言語)
- JICA Language Basic (25 Languages)

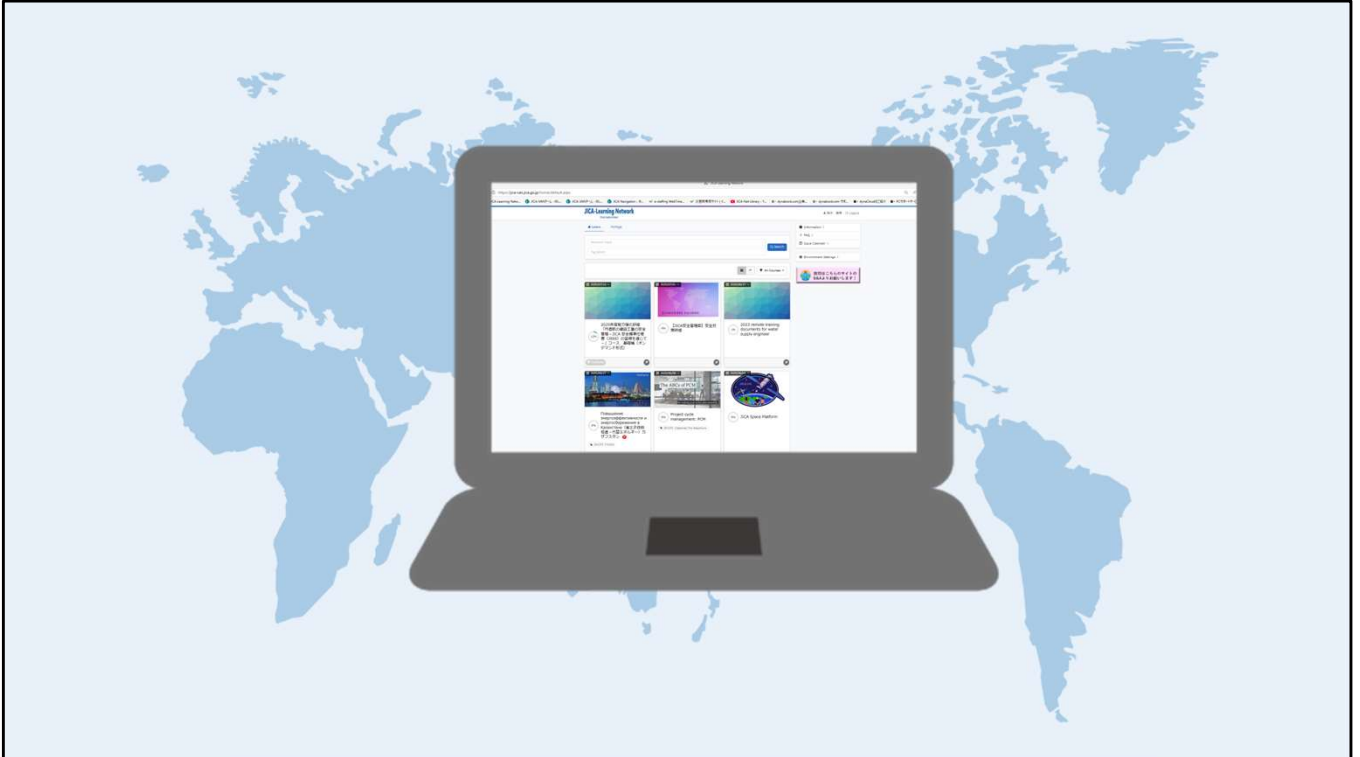
4%

2024/12/31 ~

今日

Brazilian Portuguese
French
Vietnamese
Bengali
Malagasy
Malay
Myanmar
Mozambican
Portuguese
Mongolian
Lao
Russian
English

In language classes, you can learn the basics of various languages from around the world!



The classes for the courses you are participating in may not be displayed yet.

Some courses do not use the online learning system during the courses. Additionally, some courses may be utilized after returning to your home country.

This varies by course, so please follow the instructions of your course administrator.

If you have any questions

The diagram illustrates the process of accessing the JICA-Learning Network FAQ chatbot. It shows a login page with a button labeled "JICA-Learning Network FAQ". A red dashed box highlights this button. An arrow points from the button to a chatbot window titled "JICA-Learning Network FAQ". The chatbot window displays a message in Japanese and English, followed by a text input field with the placeholder "Write your message here". A red dashed box also highlights the chatbot window.

Let's enjoy JICA-Learning Network!

If you have any questions about how to use the system, you can use the chatbot.

Click on “**JICA-Learning Network FAQ**” at the bottom right of the login page to access the chatbot.

The chatbot can also respond to questions in languages other than Japanese and English. We hope you enjoy using the JICA-Learning Network.